

ACOUSTIC WALL MOUNT

Series: 7600-TB2



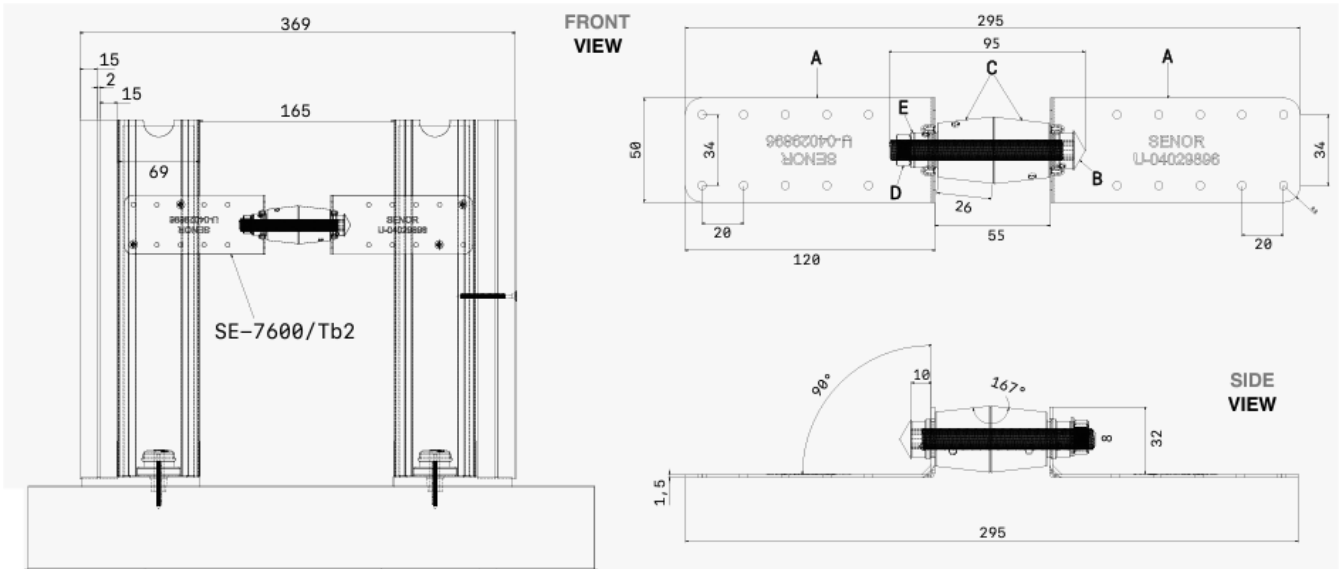
- Easy to install on any profile point.
- Enables greater distance between studs, thus eliminating noise.
- Corrects unevenness in structure.
- 7602-TB2 profile can be bent to fit smaller spaces.
- Complies with building acoustic standard ISO 10846.
- Optimal load: 5kg to 32kg per mount.
- Suited for 48/50, 70, 90 and 125 stud wall partitions.

MATERIAL

- Polymer Body: Kraiburg TPE
- Metal structure: Galvanised steel to DX51D+Z275 MA.
- Steel screw 8x95: Zinc plated Cr+3
- Standard nut DIN-934 A2 and Dock washer DIN-9021: M8 zinc steel

7600/TB2

- Load range (C¹): Force moving away from wall – 5-15kg
- Load range (C¹): Force pressed against wall – 5-32kg
- [Performance Data](#)
- [TPE Properties](#)



7602-TB2

- Load range (C¹): Force moving away from wall – 5-15kg
- Load range (C¹): Force pressed against wall – 5-32kg
- [Performance Data](#)

